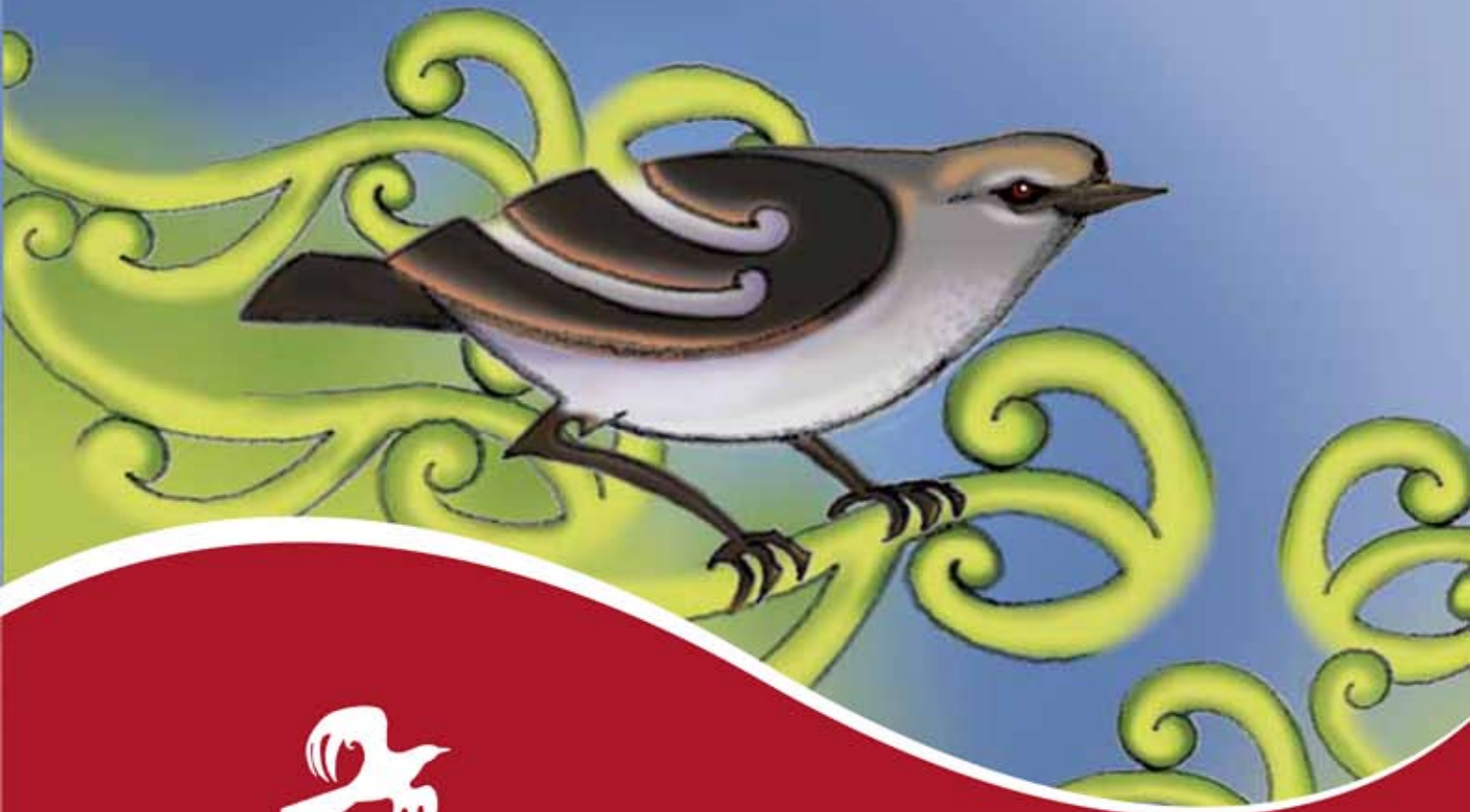


He Manu Taketake

He Tuhinga Pānui



He Manu Tuhituhi

He Pukapuka Arataki i te Kaituhi

Ngā Ihirangi

Hei Whakamārama	4
I hea koe i te tangihanga o te riroriro?	5
Te Pūtake o te Tuhinga Pānui	6
Te Pānui	
He Pānui hei Tauira	7
Ngā Āhutatanga Reo o te Pānui	8
Ngā Pātai Ārahi i te Tuhituhi Pānui	11
He Tauira Anō	15
He Mahere Ārahi i te Tuhituhi	22
Ngā Tauira Tuhinga	24
Te Kuputaka	28
Ngā Tohutoro	29
Te Matapaki	30
Te Tukanga Tuhituhi	32

Hei Whakamārama

He pukapuka tēnei mā te kaiako, mā te ākongā hoki, he pukapuka āwhina i ngā akoranga tuhituhi pānui.

Ki te kaiako,

Ko te tikanga māu tēnei pukapuka e whakamahi. Māu te wāhanga o te pukapuka me te tauira tuhinga e whiriwhiri e hāngai ana ki te momo akoranga, ngā mōhiotanga me ngā pūkenga o ngā ākongā.

Te pūtake o tēnei pukapuka

Ko te pūtake o te pukapuka nei he whakaatu i:

- Te pūtake o te tuhinga pānui
- Ngā āhuatanga reo o te tuhinga pānui
- Ngā pātai ārahi i te tuhituhi

He tuhinga hei tauira¹

Kua whakaaturia tētahi tauira tuhinga mō te tuhinga pānui. Kua whakaaturia ōna āhuatanga reo me ngā whakaatu a te kaituhi ki ētahi pātai ārahi i te tuhituhi. Ko te pūtake o ngā pātai ārahi he āwhina i ngā ākongā ki te tīmata ki te whakatakoto i ngā āhuatanga katoa mō te kaupapa o te pānui.



Te matapaki

Ka kite koe i te weka i ētahi whārangi o tēnei pukapuka. Ko te putanga o te weka he tohu whakamaumahara mā te matapaki ka oti pai ai tēnei wāhanga o te tuhinga. Mā te whakawhitiwhiti kōrero, mā te āta pātaiai a te kaiako e āwhinatia ai te ākongā kia whanake ōna pūkenga tuhituhi. Kei muri i tēnei pukapuka he whārangi e whakaatu ana i ngā huarahi matapaki, ngā momo matapaki me ētahi pātai hei āwhina i te kaituhi.

Te tukanga tuhituhi

Kua whakaaturia tētahi tukanga tuhituhi ki muri i tēnei pukapuka. Ko te tikanga kia toro haere te kaituhi ki ngā wāhanga o te tukanga nei kia pai ai te takoto o tāna tuhinga.

He tauira anō

Ko ngā tauira anō hei whakaatu i te whanaketanga o ngā āhuatanga reo, ngā tikanga tuhituhi me ngā kupu mō te tuhinga pānui. Whiriwhiria te tauira e hāngai ana ki ngā pūkenga me ngā mōhiotanga o ngā ākongā hei whakaakoranga.

Me pēhea te whakamahi i tēnei pukapuka?

Ko te mea nui, i te tīmatanga māu ēnei momo tuhinga e whakaatu, e whakaako hoki mā te **huarahi whakaako tuhituhi ngātahi**. Whai muri, ka mahia mā te **huarahi whakaako tuhituhi me te arahanga**, tae noa ki te wā ka taea e te ākongā te mahi mā te **huarahi whakaako tuhituhi takitahi**.²

Ko te mahere e whai nei hei āwhina i a koe ki te tāutu i te huarahi whakaako tuhituhi e tika ana mō ngā ākongā.

Ngā Reanga³ o He Ara Rēre me ngā Huarahi Whakaako

	Te Huarahi Whakaako Tuhituhi Ngātahi	Te Huarahi Whakaako Tuhituhi me te Arahanga	Te Huarahi Whakaako Tuhituhi Takitahi
Ka Oho	Te pānui		
Ka Whai Huru		Te pānui	
Ka Marewa			Te pānui
Ka Rere			Te pānui

¹ Kei muri i tēnei pukapuka he kape o ngā tauira tuhinga katoa. Ka taea ēnei whārangi te tārua.

² Tirohia te pukapuka aratohu mā te kaiako *Ka Rere te Manu ki te Ao Tuhituhi*, Te Wāhanga Tuatoru, mō te whakamāramatanga o ēnei huarahi e toru mō te whakaako tuhituhi.

³ Tirohia te pukapuka aratohu mā te kaiako *Ka Rere te Manu ki te Ao Tuhituhi*, Te Wāhanga Tuarua, mō ngā āhuatanga o ngā ākongā kei ngā reanga 'Ka Oho', 'Ka Whai Huru', 'Ka Marewa', 'Ka Rere'.

I hea koe i te tangihanga o te riroriro?

Tēnā koutou katoa.

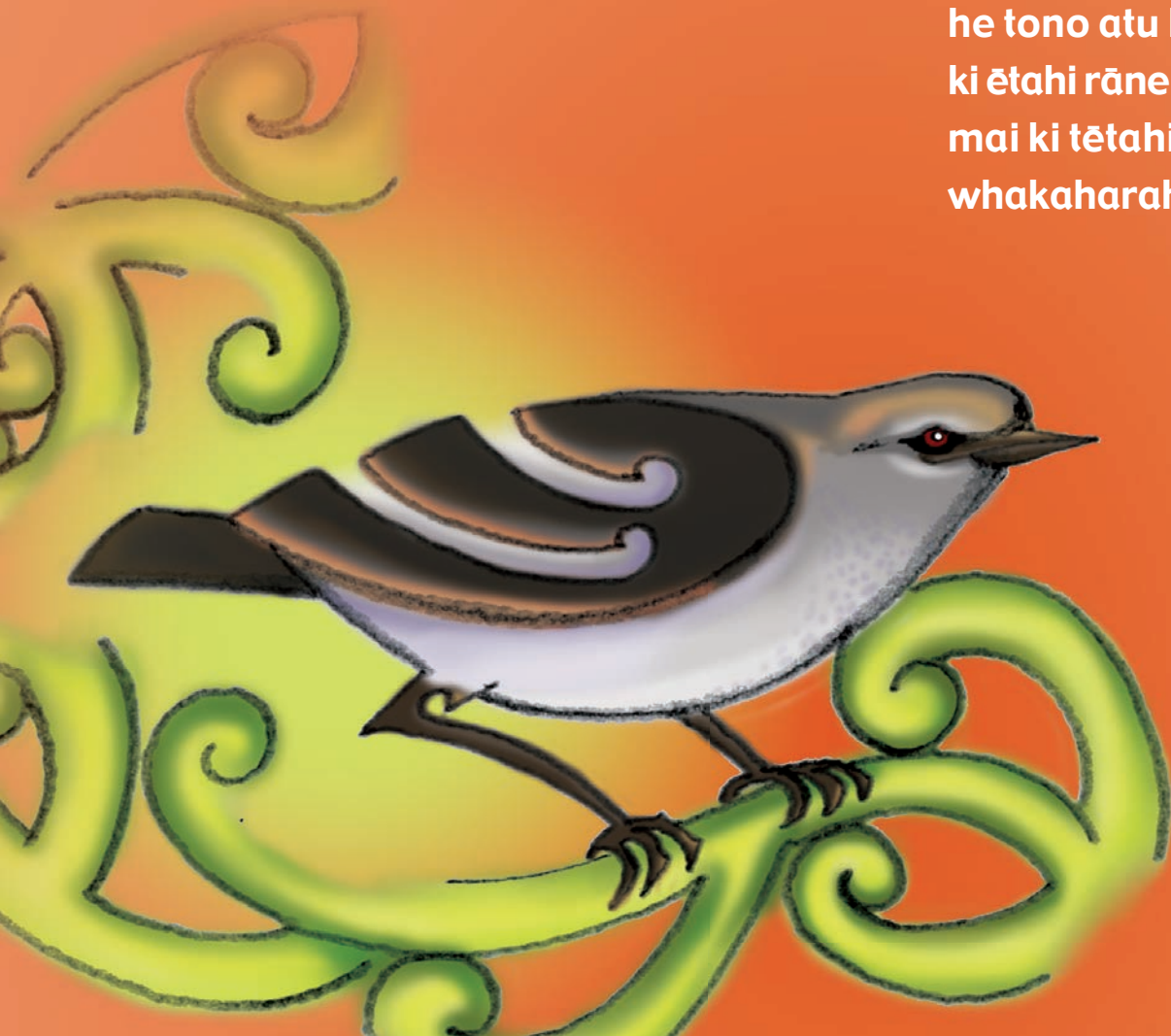
Ahakoā te iti o te riroriro, he manu kakama ia, ā, he manu tohu tau. He karere tana reo kia tohua nei ko te Mahuru tēnei. Kia rongō te tangata i tana tangi i te tīmatanga o te kōanga, ka mōhio nei kua tae te wā me whakataka te māra. Ki te kore tētahi e whakarongo ki tana pānui, hei te wā hauhake ka rongō ia i te whakataukī kei runga.

Heoi anō, ko Riroriro te kaiārahi hei tuhituhi i te tuhinga pānui.



Te Pūtake o te Pānui

Ko te pūtake o te pānui
he tono atu ki tētahi,
ki ētahi rānei, kia haere
mai ki tētahi kaupapa
whakaharahara.



He Tuhinga Pānui hei Tauira

*Ka whakaatu au i te pānui kua tuhia
e Maraea mō tana huritau tuawhitu.*



Ka whakaaturia:

- Ngā āhuatanga reo
- Ngā pātai ārahi i te tuhituhi pānui

Tirohia tāna tuhinga:



Te Hūritau a Maraea

Tēnā koe

E hiahia ana mātou ko taku whānau kia noho tahi tātou ki te
whakanui i taku huritau tuawhitu.

TE RĀ:

TE RĀHOROI TE 24 O WHIRINGA-Ā-RANGI

TE WĀ:

11 karaka i te ata – 3 karaka i te ahiahi

TE WĀHI:

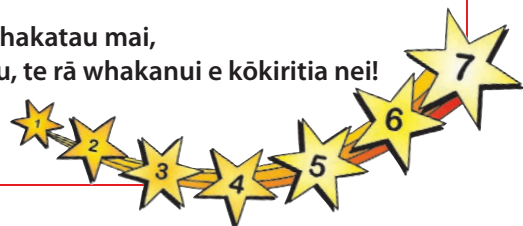
Te 24 kei te tiriti o Matariki, Te Papa-i-oea

NGĀ MAHI:

*He kai, he korikori,
he kēmu rapu taonga, he ngahau*

Ahakoia kei te puta koe kāore rānei, tēnā toro atu ki tōku māmā, ki a Ani, mā ēnei nama
waea i mua tonu i te Rāpare te 22 o Whiringa-ā-Rangi:-
Waea i te kāinga: (02) 3456789 Waea kawekawe: 012 345 6789

**Nau mai, haere mai, whakatau mai,
Ki te rā whakamiharo, te rā whakangahau, te rā whakanui e kōkiritia nei!**



Ngā Āhuatanga Reo o te Pānui



Ka tirohia ētahi o ngā āhuatanga reo o te pānui:

- Te reo pōhiri
- Te reo whakanui
- Te orokati tārua

Tirohia te whārangi e whai ake nei.

Te Whakamāramatanga o ngā Āhuatanga Reo

Te reo pōhiri

Ko tā tēnei reo he mihi atu ki te kaipānui, he whakatenatena i a ia kia haramai.

Hei tauira:

Nau mai, haere mai, whakatau mai

Te reo whakanui

Ko tā tēnei reo he whakanui i te kaupapa kia mōhio ai te kaipānui he kaupapa whakaharahara kei te haere mai. I te nuinga o te wā he tātorutanga, arā, he huanga e toru tō te reo whakanui.

Hei tauira:

te rā whakamīharo, te rā whakangahau, te rā whakanui

Te orokati tārua

Ko te orokati tārua he tāruarua i ngā orokati ōrite i ngā kupu e noho tata ana. He reka te orokati tārua ki te karu, ki te taringa hoki.

Hei tauira:

te rā **whakamīharo**, te rā **whakangahau**, te rā **whakanui**



Tirohia ngā āhuatanga reo kua
whakamahia e Maraea i tāna pānui.



Te Huritau a Maraea

Tēnā koe

E hiahia ana mātou ko taku whānau kia noho tahi tātou ki te
whakanui i taku huritau tuawhitu.

TE RĀ:

TE RĀHOROI TE 24 O WHIRINGA-Ā-RANGI

TE WĀ:

11 karaka i te ata – 3 karaka i te ahiahi

TE WĀHI:

Te 24 kei te tiriti o Matariki, Te Papa-i-oea

NGĀ MAHI:

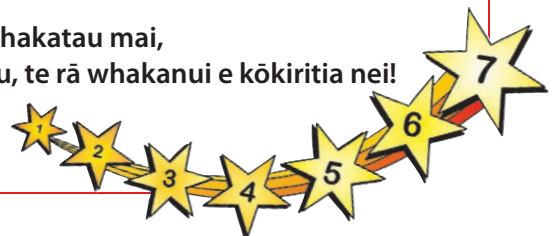
*He kai, he korikori,
he kēmu rapu taonga, he ngahau*

Ahakoia kei te puta koe kāore rānei, tēnā toro atu ki tōku māmā, ki a Ani, mā ēnei nama
waea i mua tonu i te Rāpare te 22 o Whiringa-ā-Rangi:-

Waea i te kāinga: (02) 3456789 Waea kawekawe: 012 345 6789

Nau mai, haere mai, whakatau mai,

Ki te rā whakamiharo, te rā whakangahau, te rā whakanui e kōkiritia nei!



Te reo pōhiri

Nau mai,
haere mai,
whakatau mai

Te reo whakanui

te rā whakamiharo,
te rā whakangahau,
te rā whakanui

Te orokati tārua

te rā whakamiharo,
te rā whakangahau,
te rā whakanui

Ngā Pātai Ārahi i te Tuhituhi Pānui



*E whitu ngā pātai hei ārahi i te tuhituhi pānui kia mārāma
pai ai te kaipānui ki ngā āhuatanga katoa ka pānuhia:*

1. He aha te kaupapa?
2. E tono ana ki a wai kia tae atu?
3. Āhea te kaupapa tū ai?
4. Ki hea te kaupapa tū ai?
5. He aha ngā tū mahi ka mahia?
6. Ka hiahia he whakautu ki te pānui?
7. Me whakautu ki a wai?

Tirohia te whārangi e whai ake nei.



Tirohia ngā whakautu a Maraera
ki ngā pātai ārahi i te tuhituhi pānui.

2. E tonono ana ki a wai kia tae atu?

*Ōku hoa - Rangitīhi, Taarewa,
Maria, Hoani*

3. Āhea te kaupapa tū ai?

*Te Rā: Te Rāhoroi te 24 o
Whiringa-ā-Rangi*

*Te Wā: Ka timata ā te 11 i te
ata, ka mutu ā te 3
karakā i te ahiahi*

7. Me whakautu ki a wai?

Te tangata: tōku māmā, Ani

*Nama waea: (02) 3456789,
012 345 6789*

Te wāhi imēra: -

1. Te Kaupapa

*Taku huritau
tuawhitu*

4. Ki hea te kaupapa tū ai?

*Ki taku kāinga -
te 24 kei te tiriti
o Matariki,
Te Papa-i-oea*

6. Ka hiahiaitia he whakautu?

*Āe, i mua i te Rāpare te 22 o
Whiringa-ā-Rangi*

5. He aha ngā tū mahi ka mahia?

*Ka kai, ka korikori, ka tākaro
i te kemu rapu taonga, ka
mahi whakangahau*



Kei te whārangi 23 he mahere mā te kaituhi.



Ka āta tuhituhi a Maraea i ngā whakautu ki ngā pātai. Ka whakaaro hoki ia ki ētahi kupu hei whakaoho, hei whakamīharo, hei whakatenatena hoki i te kaipānui, hei tīmata, hei whakakapi hoki i tāna pānui.

1. Te kaupapa▶ **Te Huritau a Maraea**

2. Ngā tāngata▶ Tēnā koe

E hiahia ana mātou ko taku whānau kia noho tahi tātou ki te whakanui i taku huritau tuawhitu.

3. Te wā▶ **TE RĀ:**
Te Rāhoroi te 24 o Whiringa-ā-Rangi

TE WĀ:
11 karaka i te ata – 3 karaka i te ahiahi

4. Te wāhi▶ **TE WĀHI:**
Te 24 kei te tiriti o Matariki
Te Papa-i-oea

5. Ngā mahi▶ **NGĀ MAHI:**
He kai, he korikori,
he kēmu rapu taonga, he ngahau

6. Te whakautu▶ Ahakoa kei te puta koe kāore rānei, tēnā toro atu ki tōku māmā, ki a Ani, mā ēnei nama waea i mua tonu i te Rāpare te 22 o Whiringa-ā-Rangi:-
Waea i te kāinga: (02) 3456789 Waea kawekawe: 012 345 6789

**Nau mai, haere mai, whakatau mai,
Ki te rā whakamīharo, te rā whakangahau, te rā whakanui e kōkiritia nei!**

Te whakarākeinga



Ka titiro a Maraea ki te rorohiko me te ipurangi
mō ētahi pikitia e hāngai ana ki te huritau. Ka mutu,
ka tāpiri atu i ngā pikitia, ka tīnīhia hoki ngā momotuhi
o tāna pānui kia ihiihi ai te kaipānui.



Te Huritau a Maraea

Tēnā koe

E hiahia ana mātou ko taku whānau kia noho tahi tātou ki te
whakanui i taku huritau tuawhitu.

TE RĀ:

TE RĀHOROI TE 24 O WHIRINGA-Ā-RANGI

TE WĀ:

11 karaka i te ata – 3 karaka i te ahiahi

TE WĀHI:

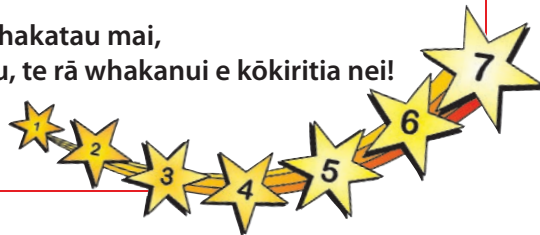
Te 24 kei te tiriti o Matariki, Te Papa-i-oea

NGĀ MAHI:

*He kai, he korikorī,
he kēmu rapu taonga, he ngahau*

Ahakoia kei te puta koe kāore rānei, tēnā toro atu ki tōku māmā, ki a Ani, mā ēnei nama
waea i mua tonu i te Rāpare te 22 o Whiringa-ā-Rangi:-
Waea i te kāinga: (02) 3456789 Waea kawekawe: 012 345 6789

Nau mai, haere mai, whakatau mai,
Ki te rā whakamiharo, te rā whakangahau, te rā whakanui e kōkiritia nei!



He Taurira Anō

Ko ngā taurira anō hei whakaatu i te whanaketanga o ngā āhuatanga reo, ngā tikanga tuhituhi me ngā kupu mō te pānui.

Ka tirohia te tuhinga, ngā āhuatanga reo me ngā whakautu ki ngā pātai ārahi i te tuhituhi.



He Pānui hei Taurira



I te marama o Pipiri ka whakarite te kura o Jade
i te hui whakanui i te putanga mai o Matariki.
Ka tuhi a Jade i te pānui hei tono atu ki tōna
whānau kia haramai ki te hui.

Nau mai rā, tiaho mai rā Matariki Ahunga Nui

He rā WHAKANUI
He rā WHAKANGAHAU
He rā NUI WHAKAHARAHARA



Kei Te Kura o Ngā Hau e Whā he pō whakanui i te putanga mai o te kāhui whetū tokowhitu
e kīia ana ko MATARIKI.

E pōhiri ana mātou o te kura a ngāi tātou ki te noho tahi kia mātakitaki atu ai i tōna putanga mai.

E whai ake nei ngā whakaritenga:

Te Rā:

Rāhoroi te tuatahi o Pipiri 2008

Te Wā:

2.00 karaka i te ahiahi – ka whakatō rākau, ka tākaro kēmu
3.00 karaka i te ahiahi – ka kōrero pūrākau, ka ngahau
7 karaka i te pō – ka mātakitaki i te putanga mai o Matariki

Te Wāhi:

Te Kura o Ngā Hau e Whā
25 Te tiriti o Parirau
Te Papa-i-oea

Me he hiahia nōu ki te puta, toro atu ki a Whaea Mereana mā ēnei huarahi e whai ake nei:

Waea: (06) 8733223, 0273312630

Īmēra: mereana@rangī.am.nz

NAU MAI, HAU MAI, WHAKARAUKA MAI

Ngā Āhuatanga Reo

Tirohia ngā āhuatanga reo kua whakamahia e Jade i tāna pānui.



Nau mai rā, tiaho mai rā Matariki Ahunga Nui

He rā WHAKANUI He rā WHAKANGAHAU He rā NUI WHAKAHARAHARA



Kei Te Kura o Ngā Hau e Whā he pō whakanui i te putanga mai o te kāhui whetū tokowhitu e kīia ana ko MATARIKI.

E pōhiri ana mātou o te kura a ngāi tātou ki te noho tahi kia mātakitaki atu ai i tōna putanga mai.

E whai ake nei ngā whakaritenga:

Te Rā:

Rāhoroi te tuatahi o Pipiri 2008

Te Wā:

2.00 karaka i te ahiahi – ka whakatō rākau, ka tākaro kēmu
3.00 karaka i te ahiahi – ka kōrero pūrākau, ka ngahau
7 karaka i te pō – ka mātakitaki i te putanga mai o Matariki

Te Wāhi:

Te Kura o Ngā Hau e Whā
25 Te tiriti o Parirau
Te Papa-i-oea

Me he hiahia nōu ki te puta, toro atu ki a Whaea Mereana mā ēnei huarahi e whai ake nei:
Waea: (06) 8733223, 0273312630
Īmēra: mereana@rangi.am.nz

NAU MAI, HAU MAI, WHAKARAUIKA MAI

Te reo pōhiri

Nau mai, hau mai,
whakarauika mai

Te reo whakanui

He rā whakanui,
He rā whakangahau
He rā nui whakaharahara

Te orokati tārua

he rā whakanui
he rā whakangahau
he rā nui whakaharahara

Tirohia te whārangi 9 mō te whakamāramatanga o ēnei āhuatanga reo.

Ngā Pātai Ārahi



Tirohia ngā whakautu a Jade ki ngā pātai ārahi.

2. E tono ana ki a wai kia tae atu?

Te whānau o te kura

3. Āhea te kaupapa tū ai?

Te Rā: Te Rāhoroi, te tuatahi o Pipiri

Te Wā: Mai i te 2 karaka i te ahiahi ki te 8 karaka i te pō

7. Me whakautu ki a wai?

Te tangata: Whaea Mereana

*Nama waea: (06)8733223,
0273312630*

*Te wāhi imēra:
mereana@rangī.am.nz*

1. Te Kaupapa

*Matariki
Ahunga Nui*

4. Ki hea te kaupapa tū ai?

*Te Kura o Ngā Hau
e Whā*

6. Ka hiahiatia he whakautu?

Āe

5. He aha ngā tū mahi ka mahia?

*whakatō rākau, kai, whakangahau,
kōrero pūrākau, tākarō kēmu*



Kei te whārangi 23 he mahere mā te kaituhi.

He Pānui hei Taurira



Kua whakaritea he hīkoi e ētahi o te iwi o Te Papa-i-oea hei whakahē i te tūkinotanga o te awa o Manawatū. Ka tuhi a Waitangi i te pānui hei whakamōhio ki te hapori he kaupapa whakahirahira kei te tū mai.

E te iwi, nau mai, haere mai, tautoko mai!

He Hīkoi mō te Awa o Manawatū

He wae rere, he wae māori, he wai ora!

Ā te Rāhoroi te 14 o Whiringa-ā-nuku haere mai ki te tautoko i te kaupapa nui:

**Ki te whakahē i ngā tūkinotanga,
Kia kore ai tō tātou awa e mate noa!**

Te hīkoi:

Te tīmatanga: 11.00 karaka i te ata ki te Whare Kaunihera kei te tiriti o Victoria
Te mutunga: 12.30 karaka i te ahiahi ki te Marae-o-Hine, te pokapū o Te Papa-i-oea

Ngā whakaritenga ki te Marae-o-Hine:

12.30 – 1.00 He waiata whakangahau

1.00 – 2.00 He kauwhau

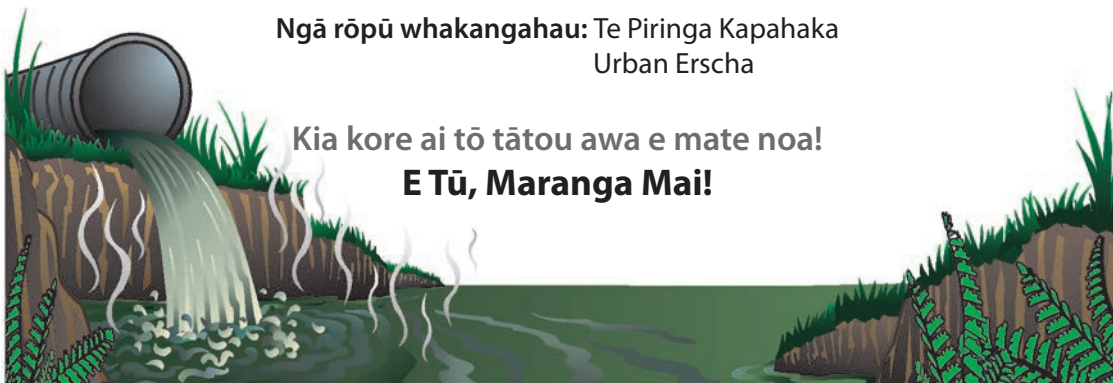
Ngā kaikauwhau:

Farah Palmer, Metiria Turei, Mike Joy, ētahi māngai mō te rangatahi

Ngā rōpū whakangahau: Te Piringa Kapahaka
Urban Erscha

Kia kore ai tō tātou awa e mate noa!

E Tū, Maranga Mai!





Ngā Āhuatanga Reo

Tirohia ngā āhuatanga reo kua whakamahia e Waitangi i tāna pānui.

E te iwi, nau mai, haere mai, tautoko mai!

He Hikoi mō te Awa o Manawatū

He wae rere, he wae māori, he wai ora!

Ā te Rāhoroi te 14 o Whiringa-ā-nuku haere mai ki te tautoko i te kaupapa nui:

**Ki te whakahē i ngā tūkinotanga,
Kia kore ai tō tātou awa e mate noa!**

Te hikoi:

Te tīmatanga: 11.00 karaka i te ata ki te Whare Kaunihera kei te tiriti o Victoria
Te mutunga: 12.30 karaka i te ahiahi ki te Marae-o-Hine, te pokapū o Te Papa-i-oea

Ngā whakaritenga ki te Marae-o-Hine:

12.30 – 1.00 He waiata whakangahau
1.00 – 2.00 He kauwhau

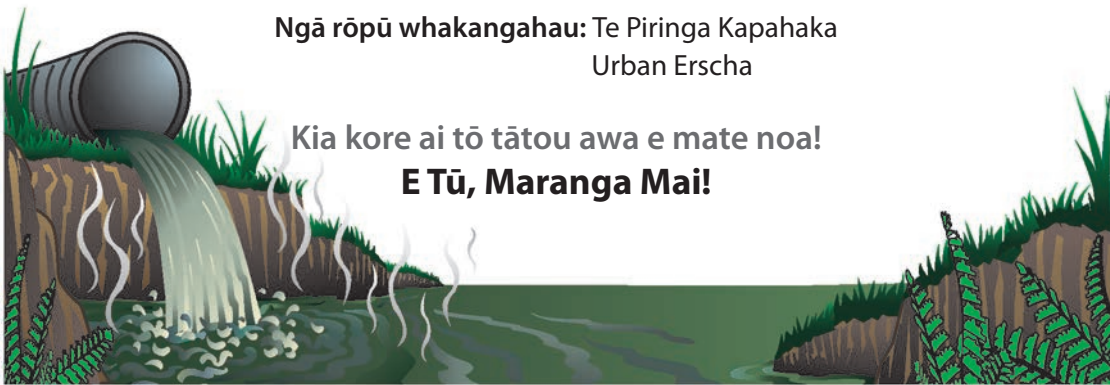
Ngā kaikauwhau:

Farah Palmer, Metiria Turei, Mike Joy, ētahi māngai mō te rangatahi

Ngā rōpū whakangahau: Te Piringa Kapahaka
Urban Erscha

Kia kore ai tō tātou awa e mate noa!

E Tū, Maranga Mai!



Te reo pōhiri

E te iwi, nau mai,
haere mai,
tautoko mai!

Te reo whakanui

He wae rere, he wae māori, he wai ora
Kia kore ai tō
tātou awa e mate noa!

Tirohia te whārangi 9 mō te whakamāramatanga o ēnei āhuatanga reo.

Ngā Pātai Ārahi



Tirohia ngā whakautu a Waitangi ki ngā pātai ārahi i te tuhituhi pānui.

2. E tono ana ki a wai kia tae atu?

Te hapori whānui

3. Āhea te kaupapa tū ai?

Rāhoroi 14 o Whiringa-ā-Nuku, māi i te 11 karaka i te ata ki te 2 karaka i te ahiahi

7. Me whakautu ki a wai?

Te tangata: -

Nama waea: -

Te wāhi imēra: -

1. Te Kaupapa

He hikoi hei whakahē i ngā mahi tākino ki te awa o Manawatū

4. Ki hea te kaupapa tū ai?

- 1. Te Whare o te Kaunihera i te Tiriti o Victoria*
- 2. Te Marae-o-Hine, te pokapū o Te Papa-i-oea*

6. Ka hiahiatia he whakautu?

Kāo

5. He aha ngā tū mahi ka mahia?

He hikoi, he kauwhau, he waiata whakangahau

Kei te whārangi 23 he mahere mā te kaituhi.

He Mahere Ārahi i te Tuhituhi



Ngā Pātai Ārahi mō te Tuhituhi Pānui

2. E tono ana ki a wai kia tae atu?

3. Āhea te kaupapa tū ai?

7. Me whakautu ki a wai?

Te tangata:

Nama waea:

Te wāhi imēra:

1. Te Kaupapa

4. Ki hea te kaupapa tū ai?

6. Ka hiahiaatia he whakautu?

5. He aha ngā tū mahi ka mahia?

Ngā Tauira Tuhinga





Te Huritau a Maraera

Tēnā koe

E hiahia ana mātou ko taku whānau kia noho tahi tātou ki te whakanui i taku huritau tuawhitu.

TE RĀ:
TE RĀHOROI TE 24 O WHIRINGA-Ā-RANGI

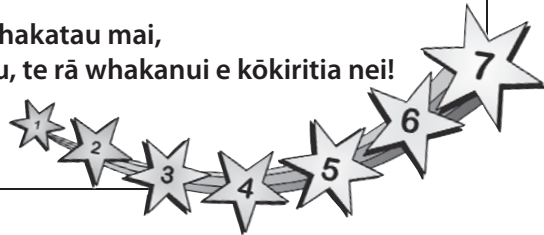
TE WĀ:
11 karaka i te ata – 3 karaka i te ahiahi

TE WĀHI:
Te 24 kei te tiriti o Matariki, Te Papa-i-oea

NGĀ MAHI:
*He kai, he korikorī,
he kēmu rapu taonga, he ngahau*

Ahakoia kei te puta koe kāore rānei, tēnā toro atu ki tōku māmā, ki a Ani, mā ēnei nama waea i mua tonu i te Rāpare te 22 o Whiringa-ā-Rangi:-
Waea i te kāinga: (02) 3456789 Waea kawekawe: 012 345 6789

Nau mai, haere mai, whakatau mai,
Ki te rā whakamīharo, te rā whakangahau, te rā whakanui e kōkiritia nei!





**Nau mai rā, tiaho mai rā
Matariki Ahunga Nui**

**He rā WHAKANUI
He rā WHAKANGAHAU
He rā NUI WHAKAHARAHARA**

Kei Te Kura o Ngā Hau e Whā he pō whakanui i te putanga mai o te kāhui whetū tokowhitu e kīia ana ko MATARIKI.

E pōhiri ana mātou o te kura a ngāi tātou ki te noho tahi kia mātakitaki atu ai i tōna putanga mai.

E whai ake nei ngā whakaritenga:

Te Rā:

Rāhoroi te tuatahi o Pipiri 2008

Te Wā:

2.00 karaka i te ahiahi – ka whakatō rākau, ka tākaro kēmu

3.00 karaka i te ahiahi – ka kōrero pūrākau, ka ngahau

7 karaka i te pō – ka mātakitaki i te putanga mai o Matariki

Te Wāhi:

Te Kura o Ngā Hau e Whā

25 Te tiriti o Parirau

Te Papa-i-oea

Me he hiahia nōu ki te puta, toro atu ki a Whaea Mereana mā ēnei huarahi e whai ake nei:

Waea: (06) 8733223, 0273312630

Īmēra: mereana@rangi.am.nz

NAU MAI, HAU MAI, WHAKARAUIKA MAI

E te iwi, nau mai, haere mai, tautoko mai!

He Hikoi mō te Awa o Manawatū

He wae rere, he wae māori, he wai ora!

Ā te Rāhoroi te 14 o Whiringa-ā-nuku
haere mai ki te tautoko i te kaupapa nui:

**Ki te whakahē i ngā tūkinotanga,
Kia kore ai tō tātou awa e mate noa!**

Te hikoi:

Te tīmatanga: 11.00 karaka i te ata ki te Whare Kaunihera kei te tiriti o Victoria
Te mutunga: 12.30 karaka i te ahiahi ki te Marae-o-Hine, te pokapū o Te Papa-i-oea

Ngā whakaritenga ki te Marae-o-Hine:

12.30 – 1.00 He waiata whakangahau
1.00 – 2.00 He kauwhau

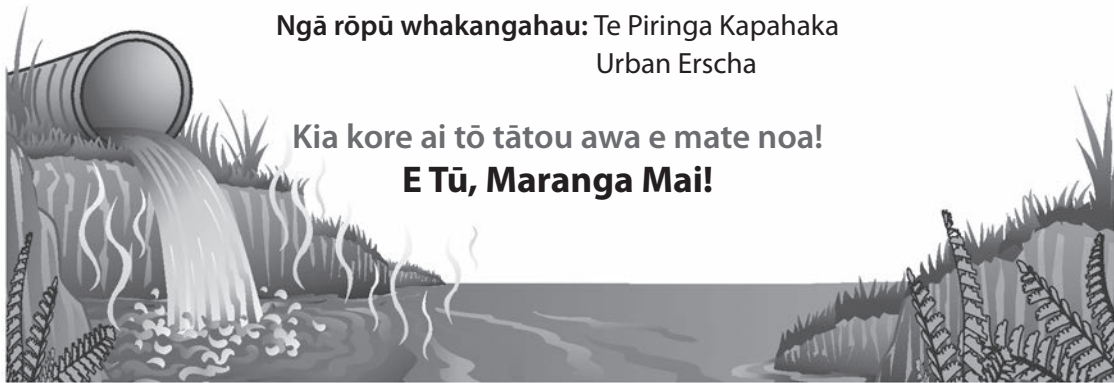
Ngā kaikauwhau:

Farah Palmer, Metiria Turei, Mike Joy, ētahi māngai mō te rangatahi

Ngā rōpū whakangahau: Te Piringa Kapahaka
Urban Erscha

Kia kore ai tō tātou awa e mate noa!

E Tū, Maranga Mai!



Te Kuputaka

ahu(nga)	Ki te ahu koe i ētahi mea, ka whakatakotoria kia nui aua mea ki te wāhi kōtahi.*
hauhake	Ki te hauhake koe i tētahi hua whenua pērā i te kūmara, ka karia ki waho o te oneone.*
kakama	Ko te manu kakama, he manu mōhio, he manu koi te hinengaro.*
kauwhau	Ki te kauwhau koe i ētahi kupu, ka kōrerotia e koe kia rongu mai te katoa. kauhau
momotuhi	Ko ngā momotuhi rerekē, arā, ngā momotuhi kua whakaritea ki te rorohiko kia rerekē ai te takoto o te kupu.
tohu tau	Ko te rongu i te tangi o te manu tohu tau, ko te kite rānei i te manu he tohu kua tīmata mai te paki pērā i te kōanga.
tūkinotanga	Ko te tūkinotanga te tuku i ngā parakino ki roto i te awa, te oneone, te hau rānei.
whakaharahara	Ko te mea whakaharahara he mea tino pai awa atu.* whakahirahira, whakamīharo
whakatenatena	Ki te whakatenatena koe i tētahi kia mahi ia i tētahi mahi, ka akiaki koe i a ia ki te mahi.

*Te Tāhuhu o te Mātauranga. (2006). *Tirohia Kimihia: He Kete Wherawhera*. Te Whanganui-a-Tara: Huia Te Manu Tuku Kōrero.

Ngā Tohutoro

Biggs, B. (1990). *Me ako taatou i te reo Māori: He Whakamaaramatanga moo ngaa mahi ako i te Reo Maori*. He mahi whakamāori nā Cleve Barlow. Auckland: Billy King Holdings.

Harlow, R. (2004). *A Māori Reference Grammar*. Auckland: Pearson Education.

Joseph, D. (2004). *Te kohinga pukapuka - Te Kōrari*. Wellington: H.A.N.A Limited.

Joseph, D. (2006, June). *He Momo Kōrero Māori, He Momo Tuhinga, He Nuka Reo: Māori Text Types, Genre and Literary Devices*. Report for the Ministry of Education Māori Language Education Team. Palmerston North: Te Pūtahi-a-Toi.

Māori Language Commission Te Taura Whiri i te Reo Māori. (1996). *Te Matatiki: Contemporary Māori Words*. Auckland: Oxford University Press.

Māori Language Commission Te Taura Whiri i te Reo Māori. *Orthographic Conventions*. I tangohia i te 29/11/05 mai i http://www.tetaurawhiri.govt.nz/english/pub_e/conventions2.shtml

Mead, H. M., rāua ko Grove, N. (2001). *Ngā Pēpeha a ngā Tipuna*. Wellington: Victoria University Press.

Ngata, H. M. (1993). *English-Māori Dictionary*. Te Whanganui-a-Tara: Te Pou Taki Kōrero.

Orbell, M. (2003). *Birds of Aotearoa: A Natural and Cultural History*. Auckland: Reed Publishing.

Riley, M. (2001). *Māori Bird Lore: An Introduction*. Paraparaumu: Viking Sevenses NZ Ltd.

Ryan, P. M. (2001). *The Reed Dictionary of Modern Māori*. Second edition. New Zealand: Reed Publishing.

Te Tāhuhu o te Mātauranga. (1996). *Te Reo Māori i roto i te Marautanga o Aotearoa*. Te Whanganui-a-Tara: Te Pou Taki Kōrero.

Te Tāhuhu o te Mātauranga. (2006). *Tirohia Kimihia: He Kete Wherawhera*. Te Whanganui-a-Tara: Huia Te Manu Tuku Kōrero.

Williams, H. W. (1975). *A Dictionary of the Māori Language*. Seventh edition. Wellington: Government Printer.



Te Matapaki

Mā te matapaki, ka whanake
ngā pūkenga tuhituhi.

Ngā Mātāpono me ngā Pūtake Whānui mō te Matapaki

E whā ngā mātāpono hei ārahi i te kaituhi me ngā tāngata āwhina ki te matapaki i āna tuhinga:

- Whakarongo ki te kaituhi.
- Ākina, tautokohia te kaituhi.
- Arahina te kaituhi ki te ara e tika ana mōna.
- E tika ana kia whai wāhi ngā tāngata āwhina ki te āwhina i te kaituhi, kaua te tuhinga.

E whā ngā pūtake whānui o te matapaki:

- Hei akiaki i te kaituhi kia whakaaturia ōna mōhiotanga kē, hei whai māramatanga hoki mō ngā mahi kei mua i a ia.
- Kia rangona e te kaituhi ngā whakawhitinga kōrero a tangata kē, kia mōhio ai ia i ngā mea kāore anō kia mau i a rātou.
- Hei āwhina i te kaituhi kia mārāma ia ki ngā āhuatanga tuhituhi kua tutuki i a ia i tāna tuhinga.
- Kia whakamōhio atu te kaituhi i ōna mōhiotanga ki te kaiako, mā tēnā te kaiako ka āwhina i a ia kia mau ngā momo rautaki tuhituhi e tika ana.

I te tuatahi, whakatauria te aronga, te huarahi me te momo matapaki.

Ngā Huarahi Matapaki

Ko ēnei ētahi o ngā huarahi pai mō te matapaki i te tuhinga:

- Takitahi
- Takirua me tētahi hoa
- Takirua me te kaiako
- Takitini

Ngā Momo Matapaki

He whakamārama i ngā pūtake o ngā momo matapaki

Matapaki mō te Kaupapa

E hāngai ana tēnei matapaki ki ngā mātauranga e hiahia ana te kaituhi kia mau i te kaupānui. Hei tauira, i te tuhinga takenga pūtaiao ka tuhi pea te kaituhi mō te take i pērā ai tētahi tū āhuatanga.

Ngā Pātai Ārahi

Ētahi pātai hei ārahi i ngā momo matapaki

- He aha te pūtake o te tuhinga?
- Mā wai te tuhinga?
- He aha tētahi tapanga mō te tuhinga?
- He aha ōu whakaaro matua mō te tuhinga?
- He aha ngā whakaaro ka tautoko i ōu whakaaro matua?
- Whakamāramatia mai ōu whakaaro.
- He mōhiotanga anō me rapu?
- He pātai atu anō āu mō te tuhinga?

Matapaki mō te Momo Tuhinga

E hāngai ana tēnei matapaki ki te momo tuhinga e tika ana mō ngā mātauranga ka whakaaturia. Hei tauira, i te tuhinga taki whaiaro ka ahu mai te hiahia i te kaituhi ki te tuhi mō tētahi wheako whaiaro ōna, ā, ka raupapahia tērā wheako i te taki.

- He aha te momo tuhinga e tika ana?
- He aha te tino take o tāu tuhinga e hiahia ana koe kia mau i te kaipānui?
- Kua whakaritea ngā whakaaro matua me ngā whakaaro tautoko?
- He tika rānei te raupapatanga o ngā mahi?
- Kua whai whakaaro ki ngā mātauranga katoa e tika ana mō te tuhinga?
- Ka aha i nāianeī?

Matapaki mō ngā Momo Rautaki Tuhituhi

E hāngai ana tēnei matapaki ki ngā rautaki tuhituhi kua whakamahia e te kaituhi i a ia e tuhituhi ana, ā, nā te aha hoki i pērā ai. Ko te pūtake o tēnei matapaki ko te āwhina i te kaituhi ki te tāutu i ngā rautaki kua whakamahia kē e ia, ki te whakawhanake hoki i tāna āheinga ki te whakamahi i ētahi atu rautaki tuhituhi.

- He aha ngā rautaki tuhituhi i whakamahia e koe ki te timata i tāu tuhinga?
- He aha ētahi raruraru i puta i a koe e tuhi ana? I ahatia ērā raruraru e koe kia oti pai ai te mahi tuhituhi? He aha māku hei āwhina i a koe?
- I pēhea tāu kōwhiringa pūtake mō tāu tuhinga?
- I muri mai i te kōwhiringa pūtake i ngāwari noa iho te kimi whakaaro hei tautoko i taua pūtake?
- Kua rerekē pēhea nei āu rautaki tuhituhi?
- Kua kite au i ētahi kupu/rerenga kua whakarerekētia e koe. I pēhea tāu whakatau kia pērā ai te whakarerekē?

Matapaki mō te Arotake Tuhinga

He matapaki tēnei hei āwhina i te kaituhi ki te pānui i āna ake tuhinga mai i te tirohanga o te hunga pānui. Ka tuku pātai te kaituhi ki a ia anō mō te māramatanga, te painga me te tutukitanga o ana tuhinga ki te kaipānui.

- He aha ōu whakaaro mō te tuhinga?
- He kupu pai ake i ērā kua whakamahia? He kupu pai ake kia mau ai i te kaipānui te pānga/iho o te tuhinga?
- Kua tuhia katoatia ngā mātauranga e hiahia ana koe kia mau i te kaipānui?
- E tika ana te reo kua whakamahia i te tuhinga kia pai ai te kawenga o ngā whakaaro?
- He pai te raupapatanga o ōu whakaaro?
- Me whai āwhina te kaipānui kia mārāma pai ai ia ki āu tuhinga?

Matapaki mō te Whakatika Tuhinga

E hāngai ana tēnei matapaki ki ngā āhuatanga kua whakatikaina kē e te kaituhi, ki te whakatika hoki i ngā tikanga tuhituhi pēnei me te tātaki kupu, te kārawarawatanga me te takotoranga o ngā kupu.

- E tika ana te ia o te tuhinga?
- E tika ana te noho o ngā tohutō?
- He tika te whakatakotoranga o ngā rerenga tuhituhi?
- Kua tuhia e koe ngā kārawarawatanga i ngā wā, i ngā wāhi hoki e tika ana?
- Ko tēnei te tino kōunga o āu mahi tuhituhi?
- Kua tutuki i a koe tētahi o āu whāinga ako? Ka aro tāua ki ēhea o ngā whāinga ako i nāianeī?

Matapaki mō te Whakaputa Tuhinga

E hāngai ana tēnei matapaki ki ngā momo whakatau e tika ana mō te whakaputa, arā, te tā tuhinga. Hei tauira, mā tēnei matapaki ka whakatauria mehemea ka tuhituhi mā te ringa, mā te rorohiko rānei me te whiriwhiri i ngā pikitia e tika ana mō te tuhinga.

- He aha te momo hanga o te tuhinga kua tā – he mahere, he pukapuka, he aha rānei?
- He aha tētahi ara kia tutuki pai ai te tā i te tuhinga?
- Ka tuhituhi koe mā te ringa, mā te rorohiko rānei?
- Mā wai e tā – māu, mā te kaiako, mā tētahi kaiāwhina rānei?
- He aha ētahi pikitia e pai ana?
- Ka meatia he pikitia kua tuhia ā-ringa, ā-rorohiko, he whakaahua rānei?

Te Tukanga Tuhituhi

Me toro te kaituhi ki mua, ki muri ki ngā wāhanga katoa kia pai ai te takoto o te tuhinga.

Te Whakarite Te whakatau, te whakarite whakaaro

- Tāutuhia te pūtake me ngā kaipānui
- Whakatauria te momo tuhinga
- Whiriwhiria tētahi tapanga kia hāngai pū ōu whakaaro ki te kaupapa
- Kohia ōu whakaaro
- Rapuhia te mātauranga
- Whakaritea ngā whakaaro matua me ngā whakaaro tautoko mō ngā wāhanga o te tuhinga

Te Whakatakoto Te waihanga tuhinga tuatahi

- Raupapahia ōu whakaaro me ngā mātauranga
- Waihangatia tāu tuhinga kia kitea te hononga o ngā whakaaro matua me ngā whakaaro tautoko
- I a koe e tuhi ana, me whakaaro hoki ki ētahi pātai e pā ana ki te pūtake o te tuhinga me ōna pānga

Te Whakamārama Te arotake, te whakamārama ake

- Pānuihia, ā, arotakengia ōu whakaaro me ngā mātauranga
- Toro atu ki tētahi/ētahi atu kia whai whakaaro arotake mai ki āu tuhinga, ā, whakamanahia ngā kōrero āwhina a te kaiarotake
- Pānuihia anō āu tuhinga kia arotakengia te pānga o te tuhinga ki te kaipānui
- Arotakengia ō tuhinga mā ēnei ara:
 - tīnīhia te raupapatanga o ngā whakaaro, o ngā kupu rānei
 - tīnīhia ngā kupu, ngā rerenga tuhituhi rānei kia pai ake te takoto o te tuhinga
 - tāpiritia atu he mātauranga anō

Te Whakatika Te whakatikatika i te reo

- Pānuihia anō tāu tuhinga
- Whakatikaina te reo o tāu tuhinga – te tātaki tika o ngā kupu, ngā tohutō, te wetewete reo me ngā kārawarawatanga

Te Whakaputa Te tā tuhinga

- Tāngia tāu tuhinga kia ngāwari noa iho te pānui, kia ātaahua hoki te takoto mā te kaipānui

Tuku atu, tuku mai Te tuku atu hei pānuitanga

- Tukuna tāu tuhinga kia pānuihia e tētahi/ētahi atu

He Pātai Ārahi

Mā te kaituhi, mā te kaipānui rānei ngā pātai nei.

- He aha te pūtake o te tuhinga?
- Mā wai te tuhinga?
- He aha te momo tuhinga?
- He aha tētahi tapanga mō te tuhinga?
- Whakamāramatia mai ōu whakaaro.
- He aha ōku/ōu whakaaro matua mō te tuhinga?
- He aha ngā whakaaro ka tautoko i ōku/ōu whakaaro matua?
- He mōhioatanga anō me rapu?

- He aha te tino take o te tuhinga e hiahia ana au/koe kia mau i te kaipānui?
- Kua tika te raupapatanga o ngā whakaaro matua me ngā whakaaro tautoko?
- Kua whai whakaaro ki ngā mātauranga katoa e tika ana mō te tuhinga?

- He aha te ariā matua o te tuhinga?
- Kua tuhia ngā mātauranga katoa e hiahia ana au/koe kia mau i te kaipānui?
- E tika ana te reo kua whakamahia i te tuhinga kia pai ai te kawenga o ngā whakaaro?
- He mārama te kaipānui ki te raupapatanga o ōku/ōu whakaaro?
- He kupu pai ake i ērā kua whakamahia?
- He kupu pai ake kia mau ai i te kaipānui ngā ariā o te tuhinga?
- Me whai āwhina te kaipānui kia mārama pai ai ia ki te tuhinga?

- E tika ana te ia o te tuhinga?
- E tika ana te noho o ngā tohutō?
- He tika te whakatakotoranga o ngā rerenga tuhituhi?
- Kua tuhia e au/koe ngā kārawarawatanga i ngā wā, i ngā wāhi hoki e tika ana?

- He aha tētahi ara kia tutuki pai ai te tā i te tuhinga?
- Ka tuhituhi au/koe mā te ringa, mā te rorohiko rānei?
- He aha ētahi pikitia, hoahoa rānei e pai ana?

- He aha ki a koe te ariā matua o te tuhinga?
- He pātai āu mā te kaituhi?
- He pai ki a koe te tuhinga? He aha ai?
- E mārama ana koe ki ngā whakaaro o te kaituhi?

